

BAUHN[®]
EFFORTLESS TECHNOLOGY



Power Meter

Model Number: PA39085

INSTRUCTION MANUAL

After Sales Support - Help Desk

Telephone: 1300 663 907
Internet: www.winplus.com.au





BAUHN[®]
EFFORTLESS TECHNOLOGY

Power Meter

Warranty Details

The product is guaranteed to be free from defects in workmanship and parts for a period of 12 months from the date of purchase. Defects that occur within this warranty period, under normal use and care, will be repaired, replaced or refunded at our discretion. The benefits conferred by this warranty are in addition to all rights and remedies in respect of the product that the consumer has under the Competition and Consumer Act 2010 and similar state and territory laws.

Our goods come with guarantees that cannot be excluded under the Australian Consumer Law. You are entitled to a replacement or refund for a major failure and for compensation for any other reasonably foreseeable loss or damage. You are also entitled to have the goods repaired or replaced if the goods fail to be of acceptable quality and the failure does not amount to a major failure.





Contents

Warranty	2
Contents	3
Welcome	4
General Safety Instructions	5
Product Features	6
Parts List / Technical Specifications	7
Product Setup	8
Product Operation	11
FAQ'S	15
Repair and Refurbished Goods or Parts Notice	18



Welcome

Congratulations on choosing to buy a BAUHN® product. By doing so you now have the assurance and peace of mind that comes with purchasing a product made by one of the leading manufacturers. All products brought to you by BAUHN® are manufactured to the highest standards of performance and safety and, as part of our philosophy of customer service and satisfaction, are backed by our comprehensive 1 Year Warranty. We hope you will enjoy using your purchase for many years to come.





General Safety Instructions

Read this manual thoroughly before first use and keep it in a safe place for future reference, along with the warranty card, purchase receipt and carton. The safety precautions enclosed herein reduce the risk of fire, electric shock and injury when correctly adhered to. Follow all instructions and take notice of all warnings to reduce the risk of fire or electric shock.

- Do not expose this product to water, rain, moisture or dust. Electronic products of this kind should never be subjected to moisture or extreme temperatures.
- Do not attempt to open the product housing. There are no user-serviceable parts inside this product.
- Do not repair the unit yourself. If your device is not functioning correctly, disconnect the product from power, and contact after sales support.
- Supervise young children to ensure they do not play with the product.
- Do not expose to water, dust, moisture, chemicals, oils, or other liquids.
- Do not expose to naked flames or other heat sources.
- Do not drop or subject the device to undue shock.
- Keep device away from magnets at all times.
- Keep away from direct sunlight. Indoor use only.
- Unplug this device during lightning storms or when unused for long periods of time.

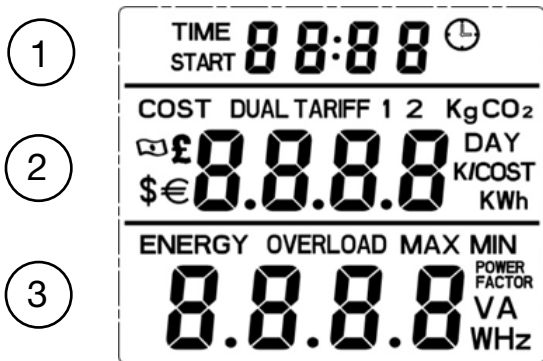
After Sales Support - Help Desk

Telephone: 1300 663 907
Internet: www.winplus.com.au



Product Features

Reading the Display



1. The Timer on the top of the LCD screen displays the total time the appliance has been measured using the Power Meter. It will begin in minutes and seconds. After one hour has elapsed the display will change to hours and minutes of use. After 24 hours the timer will reset to zero.
2. The middle section of the LCD screen displays the cost and accumulated usage stats. Press the COST button to change between accumulated energy cost, electric power usage, cost per kWh, CO₂ volume in kg and total number of days monitored.
3. The bottom section of the LCD displays the current electrical parameter. Press the ENERGY button to switch between monitoring voltages, current, power, frequency or overload alarm feature.



LCD Display

Reset Button

Energy / Set Mode

UP Button

Cost Functions

Clock / OK Button

Power Socket

Technical Specifications

Normal operation voltage: 240V AC 50Hz

Load current: 10A (Max)

Timing display range: 0 second - 9999 days

Power display range: 0.000 - 9999W

Voltage display range: 0.000 - 9999V

Current display range: 0.000 - 9999A

Frequency display range: 0.000 - 9999Hz

Rate of electricity range: 0.000 - 99.99COST/KWH

Total cost used range: \$0.000 - 9999K

Total energy consumed range: 0.000 - 9999KWH

Working Temperature: -10~50°C

Batteries: 2 x LR44

Parts List

- Power Meter (with Batteries)
- Getting Started Guide
- Warranty Card
- Warranty Stickers
- Instruction Manual

After Sales Support - Help Desk

Telephone: 1300 663 907
Internet: www.winplus.com.au



Product Setup

Connecting Appliances

1. Remove the clear tab at the rear of the product, to activate the internal batteries.
2. Plug the power meter into the mains socket.
3. Plug the appliance you wish to monitor into the front socket of the power meter.
4. Switch the mains socket power switch to "ON".
5. Use the appliance as normal - the power meter will now monitor the energy used by the appliance.

Tip: The internal batteries will allow you to set the Power Meter functions before plugging into mains power.


Setting the Time

1. Press and hold the "CLOCK" button for 3 seconds.
2. With the hour digit flashing, press "UP" repeatedly until the correct hour is reached; *Time is always displayed using the 24 hour clock, so 2:00pm must be entered 14:00 for correct operation.*
3. Press the "SET" button to accept the hour selection.
4. With the minute digits flashing, press "UP" repeatedly until the correct hour is reached.
5. Press the "SET" button to accept the minute selection.
6. Wait 10 seconds, or press the "OK" button to finish setting the time.





Setting the Tariff (cost per kWh)

1. Press the COST button for 3 seconds to enter cost mode.
2. There are 4 currencies that you can choose to have your charges display as:  (money symbol); £ (pound); \$ (dollar) or € (euro). Press the UP button to cycle through the symbols and press OK to confirm your selection.
3. The Power Meter features a dual tariff system, that is, you can have 2 different tariff rates for 2 periods of the day. This is useful if you have a peak and off-peak energy billing system.
4. Press the UP button to choose between a single tariff (Tariff 1 will be displayed on the LCD) or dual tariff (DUAL TARIFF will be displayed on the LCD.) Press OK to confirm your selection.
 - a. If you choose a single tariff you will only be asked to enter 1 rate. Set the rate using the UP button in the range of 0.00 – 9999COST/KWH. Use the SET button to navigate between the digits. Press the OK button to confirm your selection. When you have finished setting the rate, press the COST button to save your settings.
 - b. If you choose Dual Tariff, the tariff you are current editing will be highlighted on the display as either Tariff 1 or Tariff 2. You can cycle between the two by pressing the SET button.
5. Set the rate using the UP button in the range of 0.00 – 9999COST/KWH. Use the SET button to navigate between the digits. Press the OK button to confirm your selection.
6. Set the time the tariff will begin using the UP button, the first 2 digits are for hours (range 0-23), the second 2 digits are for minutes (range 0-59). Use the SET button to navigate between minutes and hours. Press OK to confirm your selection.
7. Once you finish the tariff settings for Tariff 1 you will be asked to enter the details for Tariff 2 using the same steps as above.





- When you have finished all the settings, press the COST button to save all your settings.

Note: During daylight savings, SUMMER is displayed on the bottom right of the screen. In winter mode, there is no special indicator on screen.

Tip: You can hold down the UP button to increase the number quickly.

Setting the Overload Alert Threshold

The Bauhn Power Meter is equipped with an overload alert feature to help identify power spikes or surges. When the set threshold is exceeded, "OVERLOAD" will flash next to ENERGY on the display. Follow the below instructions to set the overload alert threshold.

- Press and hold the ENERGY button for 3 seconds to enter the "OVERLOAD" setting. The first number will begin to flash.
- Push the UP button to change the flashing number.
- Push the SET button to toggle between numbers.
- Push the OK/CLOCK button to return to the home screen once the value is set.





Operation

Monitoring the Cost of Operating the Appliance

1. By default, accrued cost is shown on the centre line of the main menu screen.
2. Accrued cost is calculated as a total of the energy consumed through the energy meter.
3. Further details about the true cost of operating your appliance can be found by pressing the "COST" button repeatedly to cycle through the following information:
 - kWh – total kWh consumed by the appliance during the monitoring period.
 - kgCO₂ – total CO₂ emissions associated with the appliance during the monitoring period.
 - Tariff 1 cost per kWh – tariff setting for Tariff code 1 (off peak rate).
 - Tariff 2 cost per kWh – tariff setting for Tariff code 2 (peak rate).
 - Cost - total cost associated with use of the appliance during the monitoring period.

Checking the Current Monitoring Period

1. From the main menu screen, press the "CLOCK" button.
2. Accumulative time will be shown at the top of the screen, this is the total time within the current monitoring period.





Monitoring the Current Energy Consumption

1. By default, current power consumption in watts is shown on the bottom line of the main menu screen.
2. Further details about the current power consumption can be found by pressing the ENERGY button repeatedly to cycle through the following information:
 - Voltage – voltage supplied to the appliance.
 - Frequency – the frequency of the power supplied, shown in Hz.
 - Current – the instantaneous current draw of the appliance, shown in Amps.
 - Power factor – the difference between the real power and apparent power (useful for monitoring power supplied from an inverter).
 - Max watts – maximum wattage reached during the current monitoring period.
 - Min watts – minimum wattage read during the current monitoring period (0W will not be read during the reporting period).
 - Energy overload – the current setting for the overload warning.
 - Current consumption – the current energy being consumed, in watts.





Resetting the Power Meter

1. Locate the red RESET button on the front of the energy monitor.
2. Use a pen or a pencil to push down on the reset button for a few seconds.
3. The screen will go blank.
4. Release the RESET button – all settings will be the factory default settings.

Cumulative Time Display

Your Power Meter will begin to count the time that an appliance has been in use when it detects power usage over 2W. This will be displayed at the top of the LCD display. You can swap between the clock and cumulative time using the CLOCK button.

When showing the cumulative time in use, DAY will be displayed on the LCD display to indicate days of use. This will increase when 24hrs of cumulative usage has occurred.



Frequently Asked Questions

Question	Answer
My Power Meter isn't turning on	The battery in the Power Meter may be flat. Replace the batteries by using a screwdriver to open the battery compartment at the rear of the product. Replace the batteries using 2 x LR44 batteries, observing the correct polarity.
My Power Meter is not showing the right information	Try resetting the Power Meter to default and reprogramming the information required. Press down the Reset button using a paperclip or pencil, and hold for 3 seconds to reset.
My Power Meter isn't counting the energy usage	The Power Meter will not start counting energy usage unless the plugged in device is using more than 2W of energy.
My Power Meter isn't displaying any information	Check the power outlet the power meter is connected to is switched on.
How can I find out the cost of my electricity in kWh?	See your most current power bill or contact your electricity supplier.
Can I use the Bauhn Power Meter with a Power Board?	Yes, the Power Meter will measure all devices including Power Boards up to 2400W, 10A.



BAUHN[®]
EFFORTLESS TECHNOLOGY

Power Meter

Repair and Refurbished Goods or Parts Notice

Unfortunately, from time to time, faulty products are manufactured which need to be returned to the Supplier for repair.

Please be aware that if your product is capable of retaining user-generated data (such as files stored on a computer hard drive, telephone numbers stored on a mobile telephone, songs stored on a portable media player, games saved on a games console or files stored on a USB memory stick) during the process of repair, some or all of your stored data may be lost. We recommend you save this data elsewhere prior to sending the product for repair.

You should also be aware that rather than repairing goods, we may replace them with refurbished goods of the same type or use refurbished parts in the repair process.

Please be assured though, refurbished parts or replacements are only used where they meet ALDI's stringent quality specifications.

If at any time you feel your repair is being handled unsatisfactorily, you may escalate your complaint. Please telephone us on 1300 663 907 or write to us at:

WINPLUS AUSTRALASIA
PO BOX 537
BAYSWATER BUSINESS CENTRE VIC 3153

WINPLUS HELP DESK: 1300 663 907
EMAIL: customer-care@winplus.com.au

After Sales Support - Help Desk

Telephone: 1300 663 907
Internet: www.winplus.com.au



BAUHN[®]
EFFORTLESS TECHNOLOGY

